

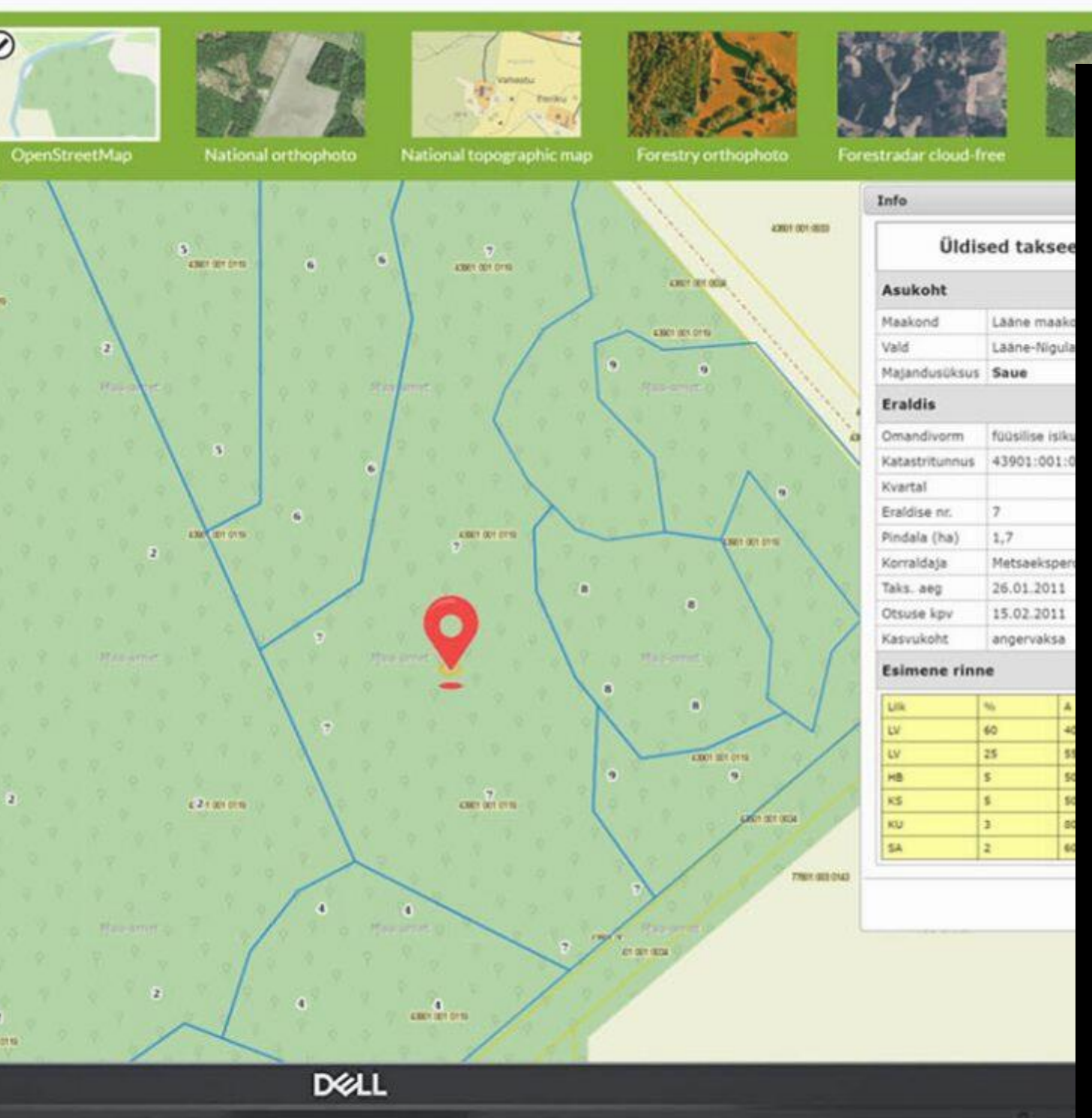


E-posti aadress või kasutajanimi

\*\*\*\*\*



# PROJECT EST-LAT86 MYTREE ALERT SERVICE



MODUL SIA & DESKIS OÜ

## TOPICS TO DISCUSS

Users

What is and what we need

Forestman and ForestRadar

ForestRadar solution

Contact Us

## USERS

How many forestry companies and private forest owners do we have, who use software and maps on daily bases?

Forestmans have the need for geolocation positioning, forest data visualization and collocation.



Clarence Roberts

Forest Company AS

 DASHBOARD

 NOTES

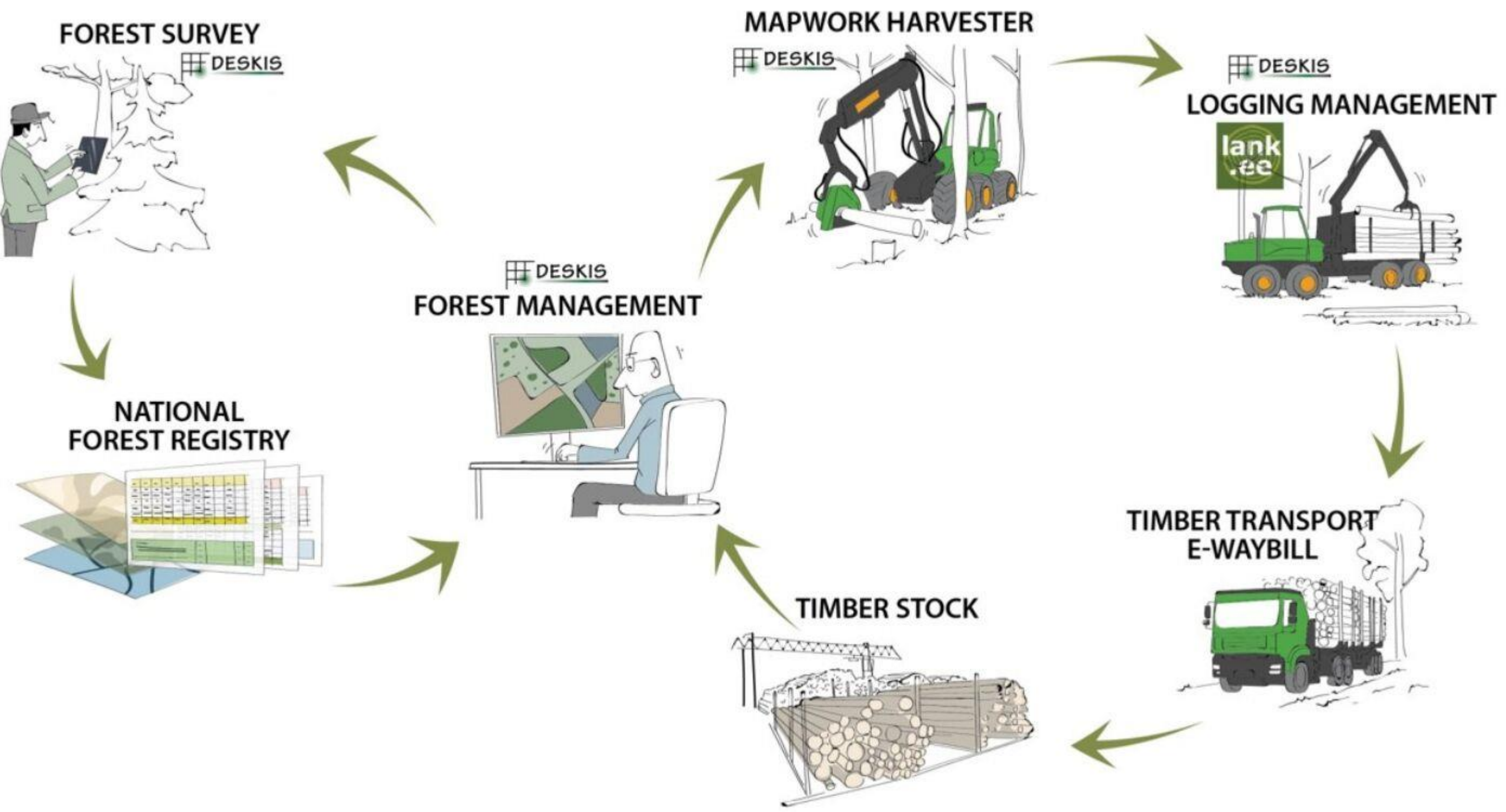
 FOREST

 MAP

 ANALYSIS

 SETTINGS

 LOG OFF



MODUL SIA & DESKIS OÜ

**LATVIA WILL GET MAPS**

Currently: Latvia`s maps = difficult

**COLLOCATED DATA MANAGEMENT**

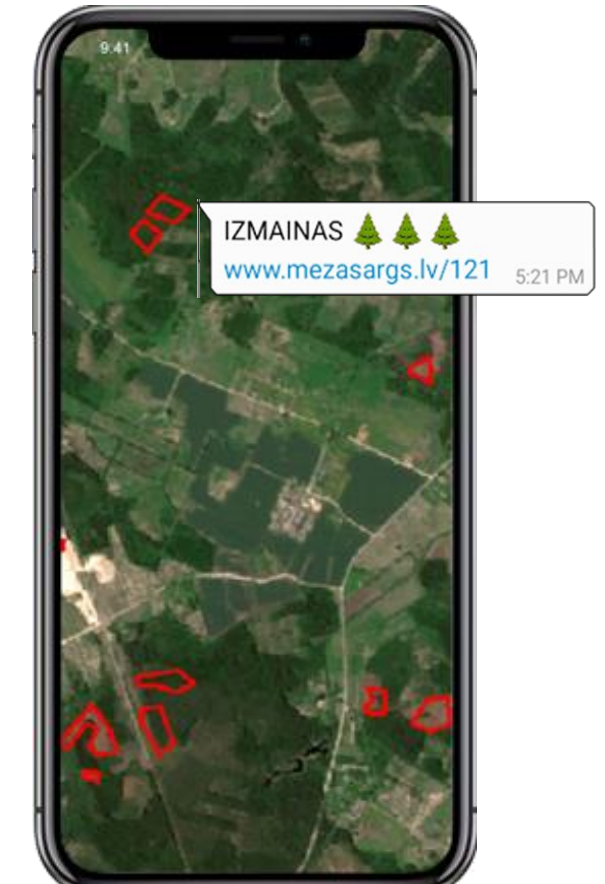
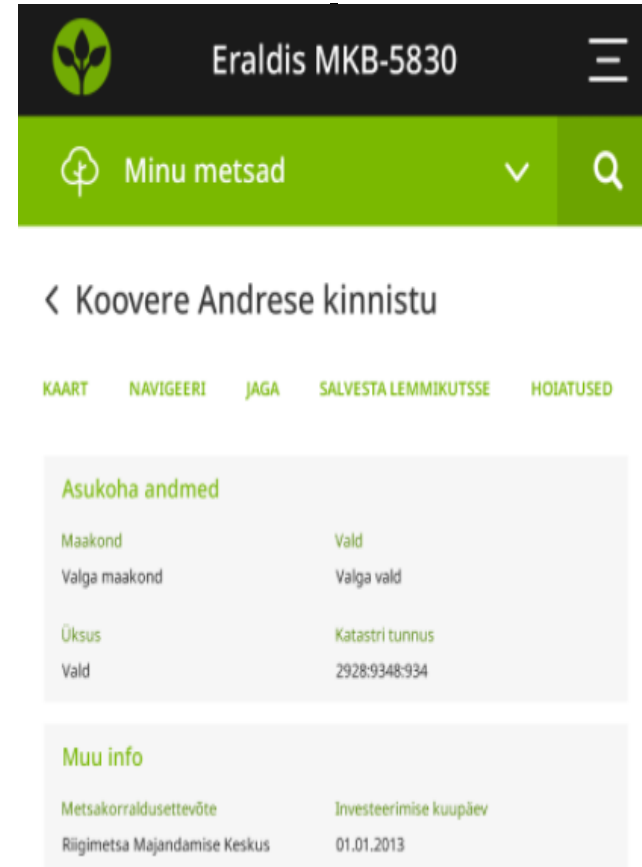
Metsaeraldised2 and Metsahaldus lite, add to my map

**GEOPOSITIONING**

Different phones, estate borders

**ANALYZE**

ForestRadar change detection  
Key stone habitat  
No clouds, please!



## PHASE ONE

Forestradar and  
cloudless orto  
Landboard data  
Google maps

## PHASE TWO

Forest Register +  
Deskis softwares +  
user data

## PHASE THREE

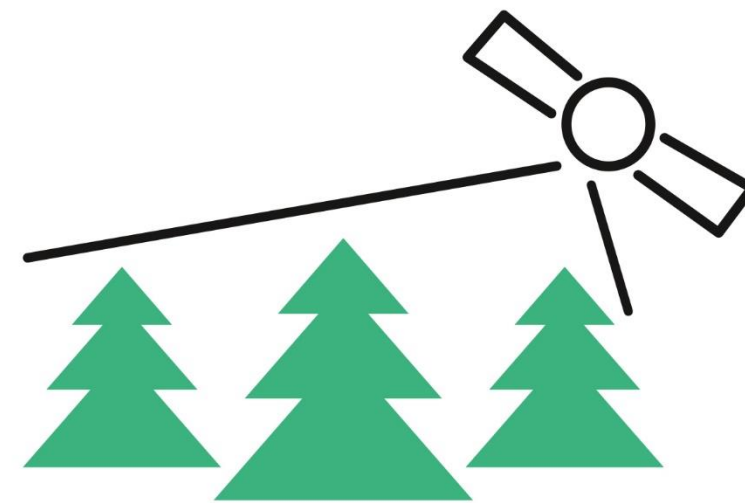
Geolocation  
Planning, selling,  
cutting activities

## PHASE FOUR

Automated analyzes for  
landuse changes,  
habitats and other FSC  
regulations

THE SOLUTION

# FORESTRADAR



ForestRadar



This presentation reflects the views of the author. The managing authority of the programme is not liable for how this information may be used.



## KEY TECHNOLOGY FORESTRADAR TO PROVIDE NEW KNOWLEDGE

---

- fully automated technology ForestRadar to obtain, process and apply satellite imagery and analytics to your GIS/IT software
- a combination of satellite imagery data and Machine Learning (ML) algorithms precisely detects new clear-cut areas (country-wide)
- forestman (forestman.eu) - forest assets management with integrated satellite-based monitoring in the cloud

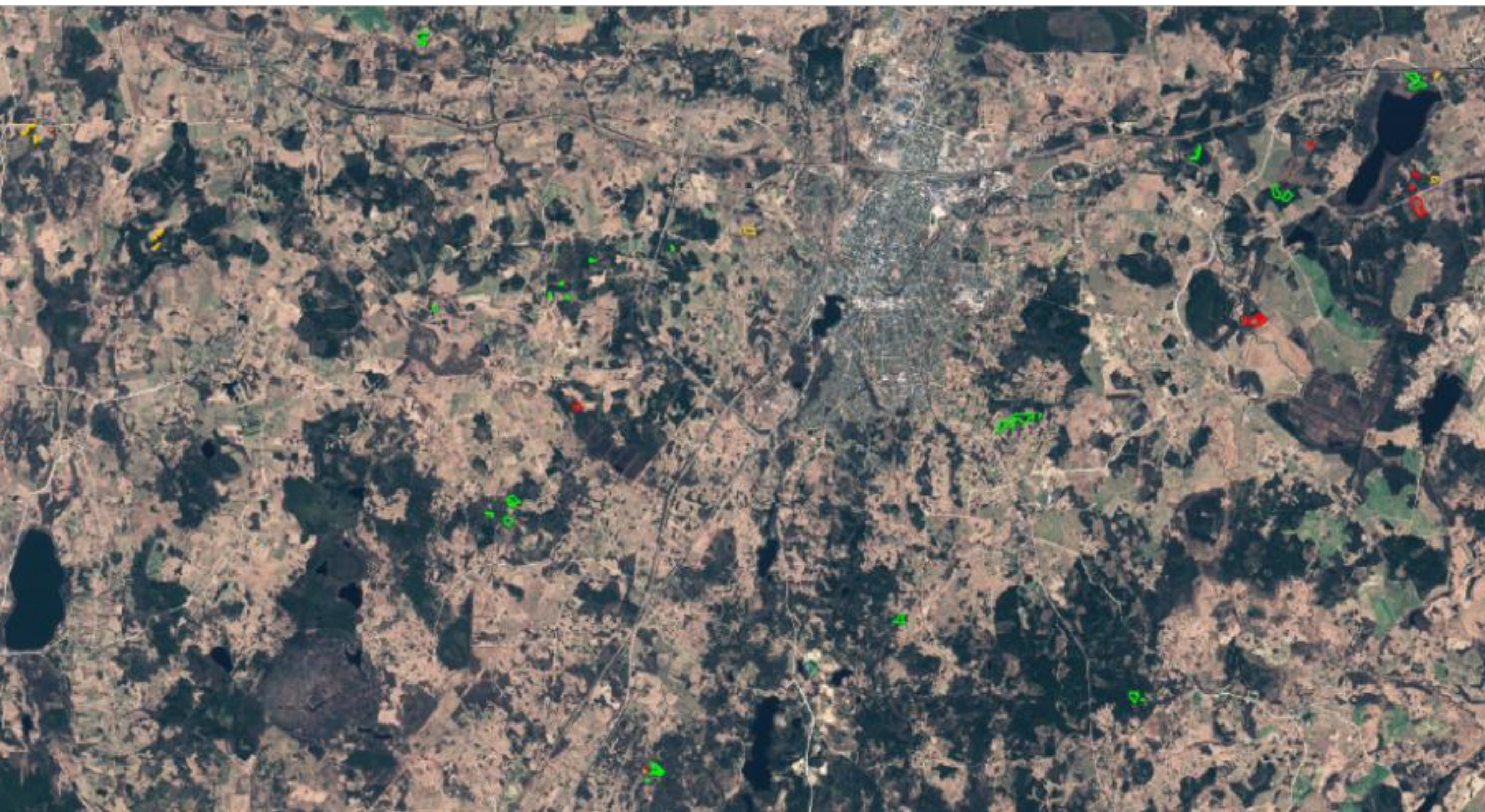
WEEKLY ALERT SERVICE  
TO SECURE YOUR FOREST











## FORESTRADAR CHANGE DETECTION - REGULAR MONITORING OF CLEAR-CUT PROCESS BY POLYGONS

- detects clear-cuts (wind-falls and fire burnt areas are coming soon)
- weekly/monthly change alerts (polygons delivered in the e-mail and/or web application (API) in any vector format)
- small detection areas - starting from 0,25 ha
- very high accuracy - 95%
- validated technology with > 8 000 polygons



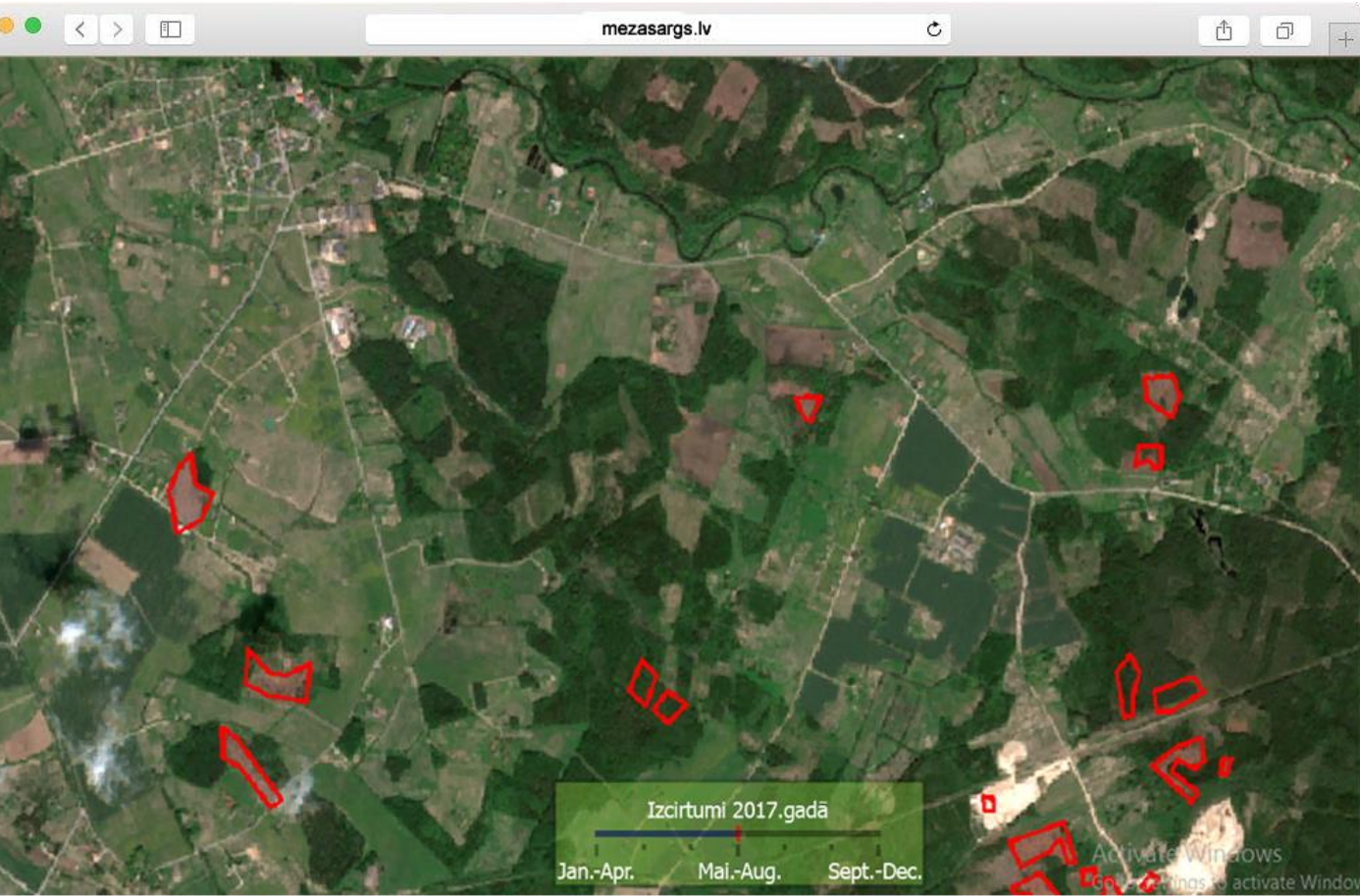


Current status assigned to each polygon, for instance:

-  **CirsmasBSS - visi**
-  0 - Nav apstrādāts
-  1 - 80-100% izcirtums
-  2 - 0-20% izcirtums
-  3 - Cits (izcirtuma platība pie
-  4 - Nav nosakāms
-  **CirsmasBSS - nav apstrādāti**
-  **ForestRadar Optical Basemap**

- 1 80-100% clear-cut
- 2 0-20% clear-cut
- 3 other (clear cut area % in notes)
- 4 impossible to detect

# FORESTRADAR ALERT SERVICE – VERY EASY TO USE IN THE CLOUD



IZMAINAS 🌲🌲🌲  
[www.mezasargs.lv/121](http://www.mezasargs.lv/121) 5:21 PM

1. Draw or upload your forest properties in [forestman.eu](http://forestman.eu)

2. Receive alert polygons if change is detected

3. See detected change in [forestman.eu](http://forestman.eu)

## FORESTRADAR CLOUD-FREE BASEMAP

<https://api.forestradar.com/tiles-v1/sdr-vDi5OkDhaFUDO68vwuue/optical.html>

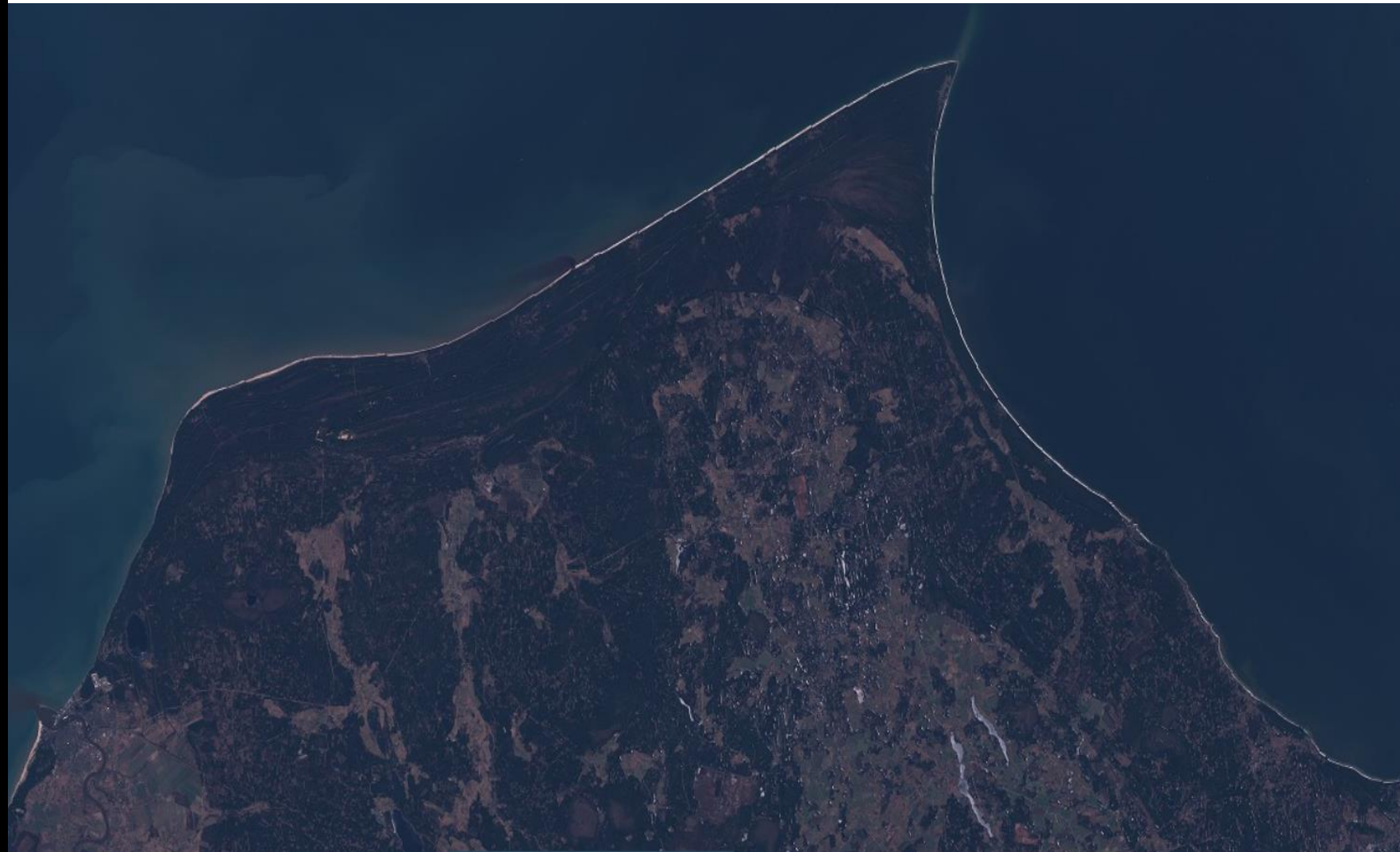
- completely cloud-free imagery
- weekly updates for areas without clouds
- metadata (date, time satellite, etc.)
- the most actual imagery basemap service (API) to add in any Desktop or Web GIS application



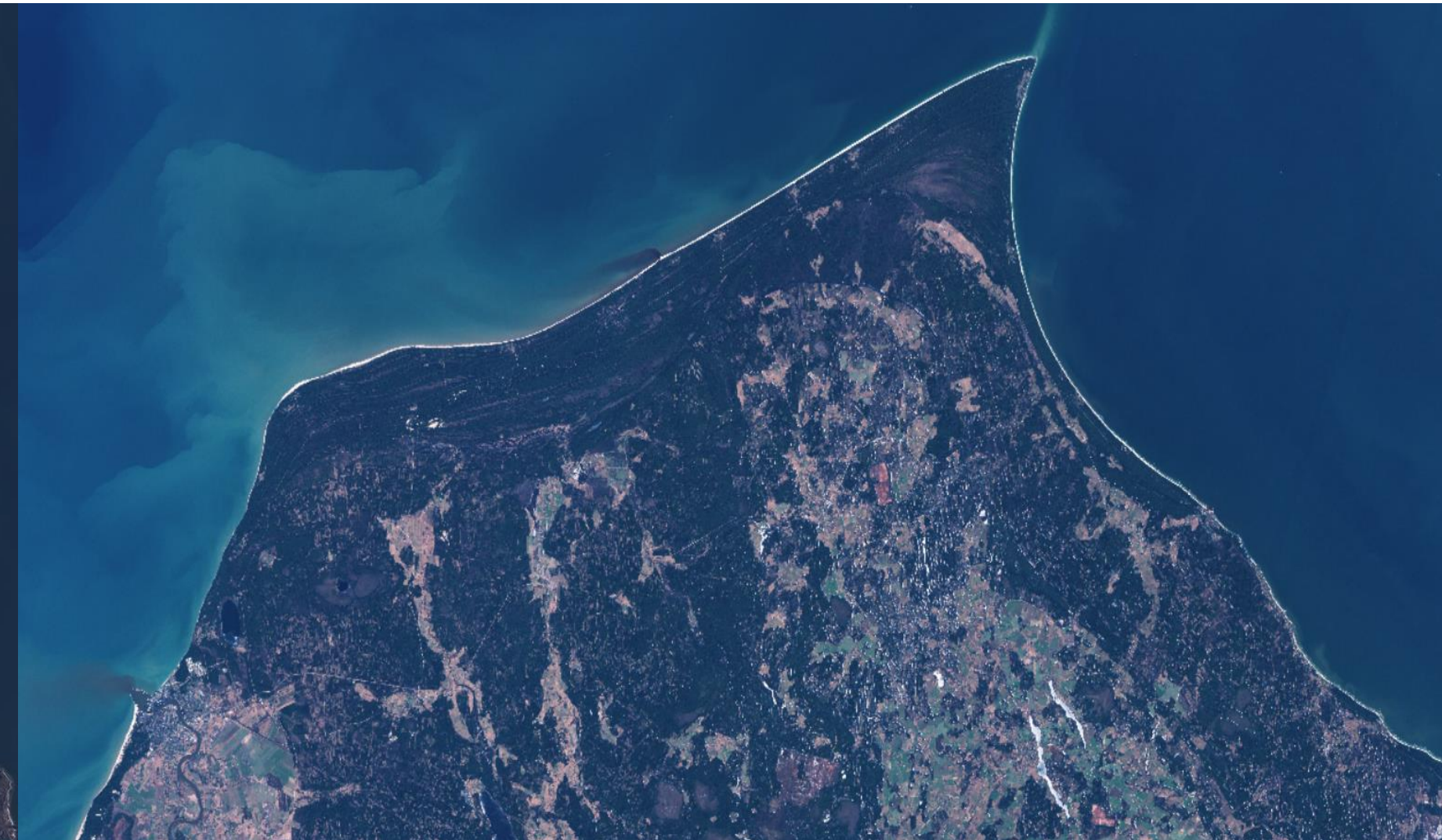
# FORESTRADAR CLOUD-FREE BASEMAP (COLORS)

<https://api.forestradar.com/tiles-v1/sdr-vDi5OkDhaFUDO68vwuue/optical.html>

COPERNICUS SENTINEL PLAYGROUND



FORESTRADAR CLOUD-FREE BASEMAP



# FORESTRADAR CLOUD-FREE BASEMAP (CLEAR-CUTS)

<https://api.forestradar.com/tiles-v1/sdr-vDi5OkDhaFUDO68vwuue/optical.html>

GOOGLE MAPS (MAY, 2019)



FORESTRADAR CLOUD-FREE BASEMAP (APRIL, 2019)



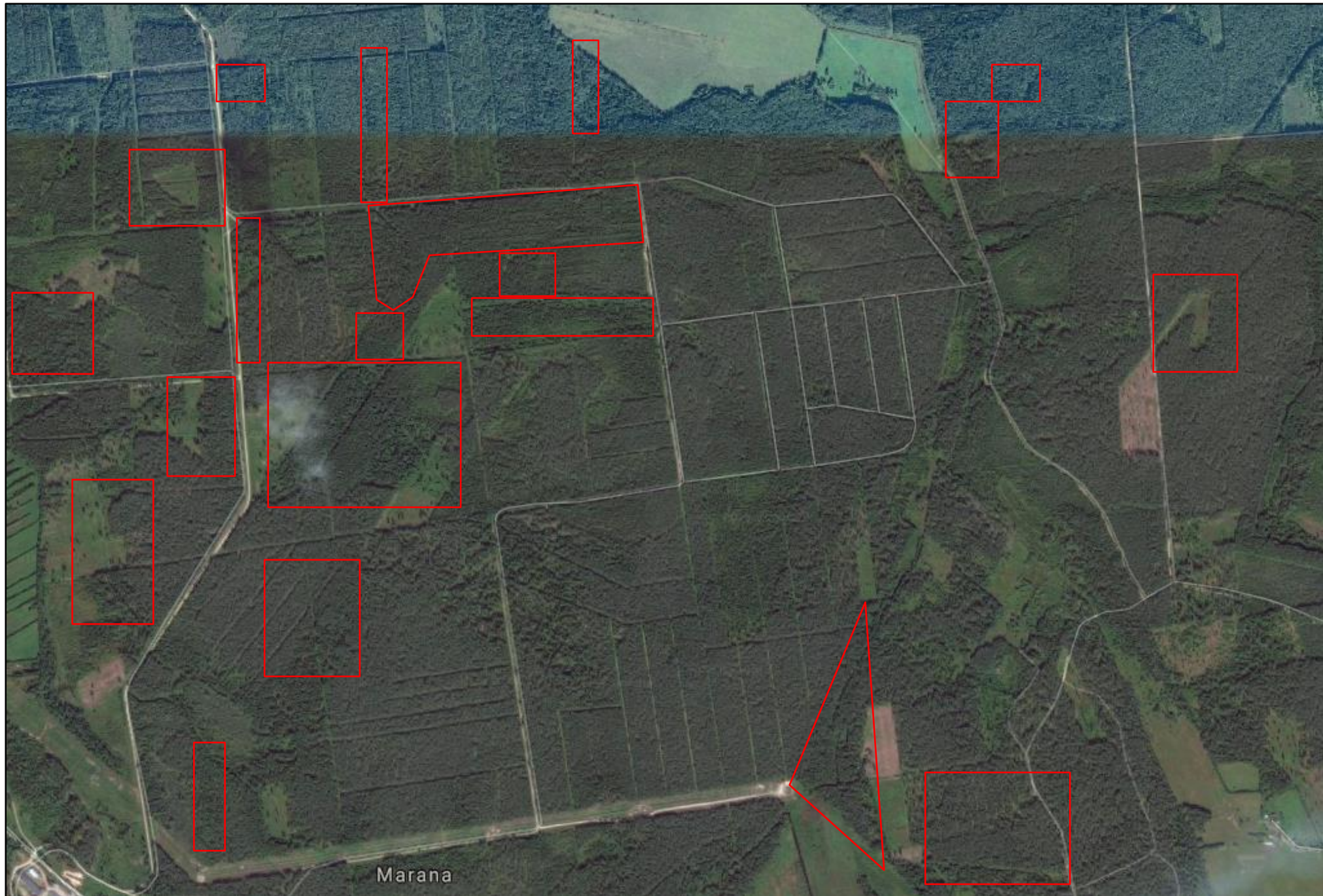
CLEAR-CUTS, RUGĀJI DISTRICT (KALNIS LAKE SURROUNDING), LATVIA

# FORESTRADAR CLOUD-FREE BASEMAP (CLEAR-CUTS)

<https://api.forestradar.com/tiles-v1/sdr-vDi5OkDhaFUDO68vwuue/optical.html>

GOOGLE MAPS (MAY, 2019)

FORESTRADAR CLOUD-FREE BASEMAP (APRIL, 2019)



CLEAR-CUTS, MARANA, PÄRNU AREA, ESTONIA

# FORESTRADAR CLOUD-FREE BASEMAP (WIND-FALLS)

ForestRadar data, windfall in LV 06.2019 (1)



# FORESTRADAR CLOUD-FREE BASEMAP (WIND-FALLS)

ForestRadar data, windfall in LV 06.2019 (2)

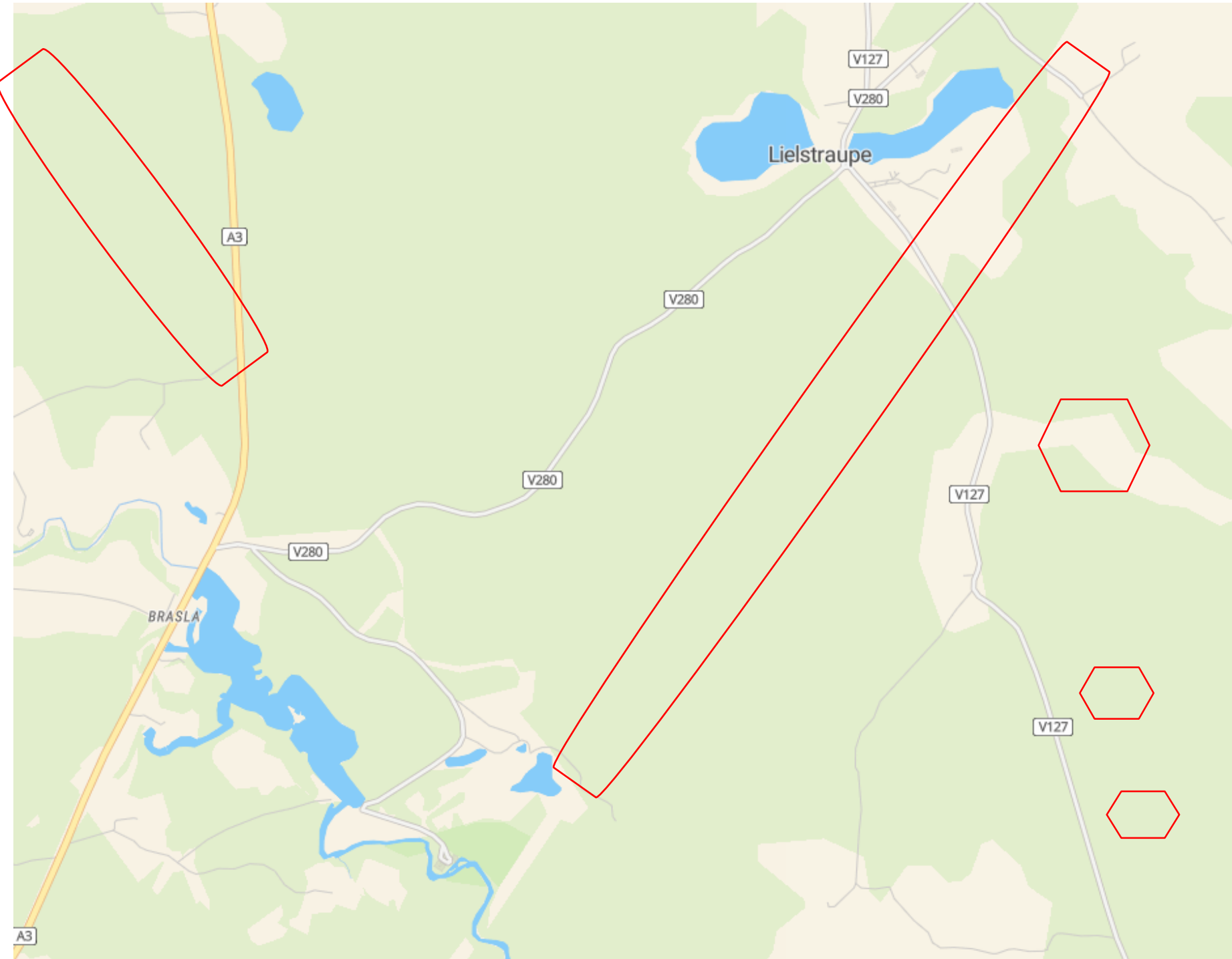




# FORESTRADAR CLOUD-FREE BASEMAP (NEW ROAD, UTILITY NETWORK, WATER)

<https://api.forestradar.com/tiles-v1/sdr-vDi5OkDhaFUDO68vwuue/optical.html>

OPENSTREETMAP

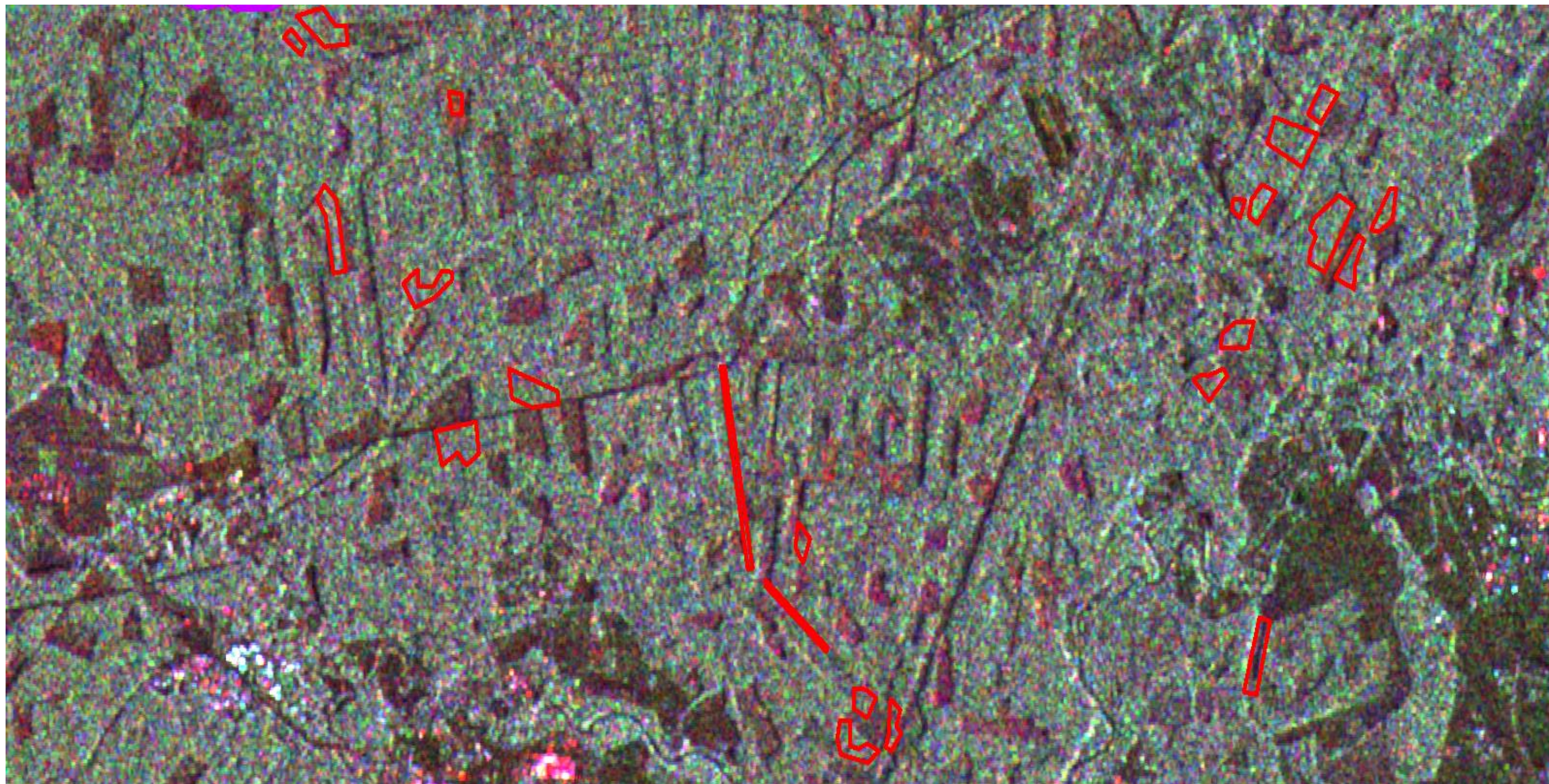


FORESTRADAR BASEMAP (APRIL, 2019)



LIELSTRAUPE AREA, LATVIA

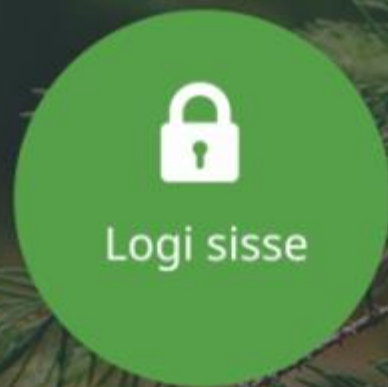
# FORESTRADAR - LOOK THROUGH THE CLOUDS!





E-posti aadress või kasutajanimi

\*\*\*\*\*



## PROJECT EST-LAT86 MYTREE ALERT SERVICE

**Thank you for your attention!**

**forestman.eu**  
**forestradar.com**